



GMT MONTHLY MEMBERSHIP PROGRESS REPORT

Results as of: 6/30/2020

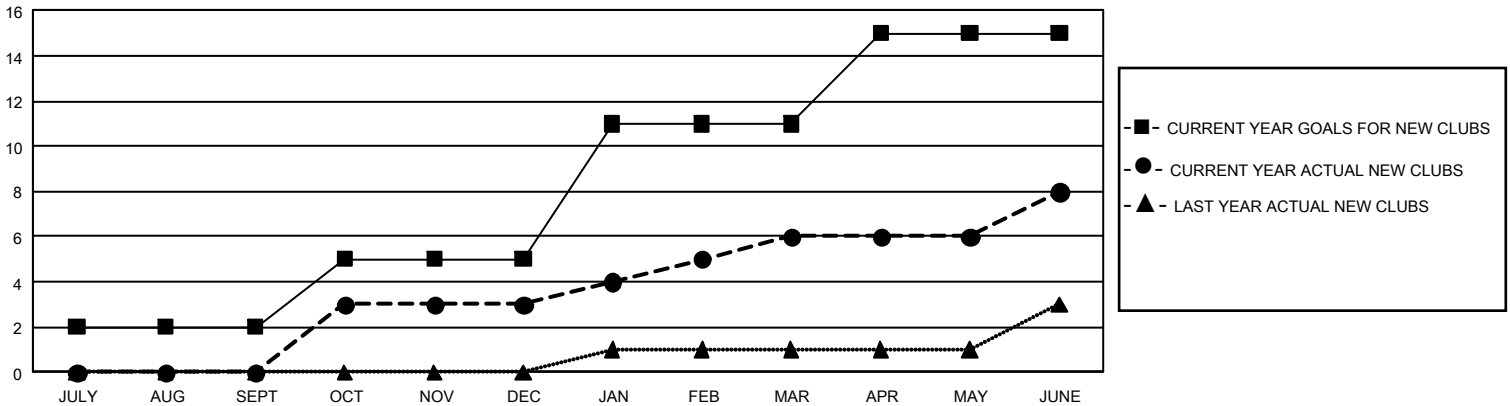
GMT Constitutional Area 1, Group K

GMT: OPEN

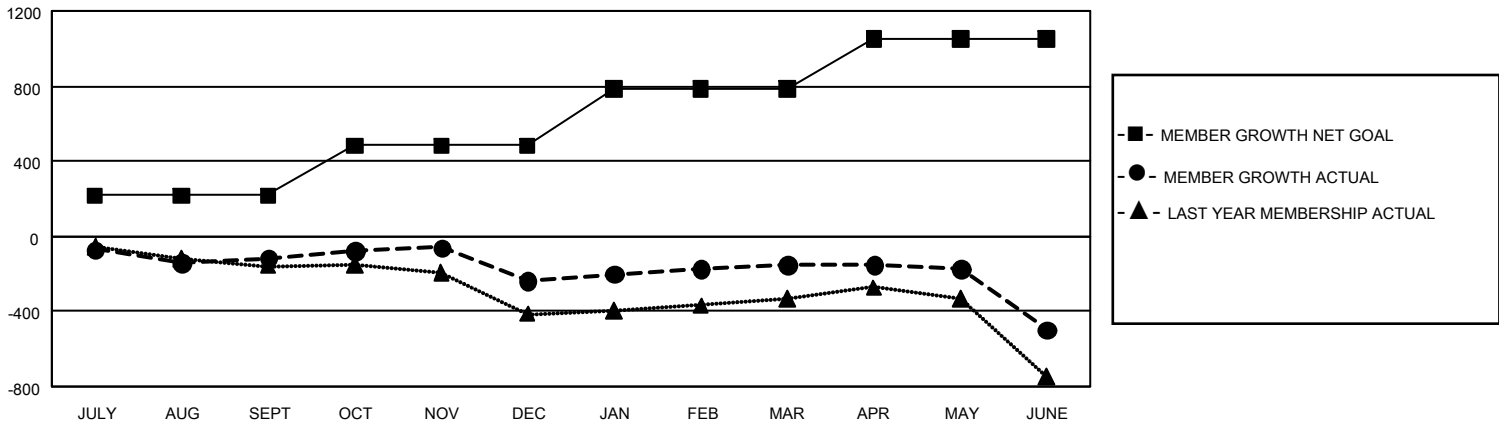
REPORT DOES NOT INCLUDE CLUBS IN UNDISTRICTED AREAS.

Clubs				Members			
RESULTS FOR 2019-2020				RESULTS FOR 2019-2020			
QUARTER	NEW CLUB GOAL	NEW CLUBS	DROPPED CLUBS	QUARTER	MEMBER GROWTH NET GOAL	MEMBER GROWTH ACTUAL	DROPPED MEMBERS ACTUAL (including transfers)
JULY/AUG/SEPT	6	0	5	JULY/AUG/SEPT	645	303	369
OCT/NOV/DEC	9	3	3	OCT/NOV/DEC	798	451	554
JAN/FEB/MAR	18	3	2	JAN/FEB/MAR	918	470	365
APR/MAY/JUNE	12	2	3	APR/MAY/JUNE	792	329	628

GOALS AND ACTUAL NEW CLUBS CUMULATIVE



GOALS AND ACTUAL MEMBERS CUMULATIVE



DROPPED CLUBS: 13	366 CLUBS OF 602 ADDED 1 OR MORE NEW MEMBERS	<u>GENDER DISTRIBUTION</u> MALE 11,661 (64.72%) FEMALE 6,356 (35.28%)
<u>DROPPED MEMBERS</u> DECEASED 252 CLUB CANCELLED 44 OTHER 1,620 <hr/> TOTAL 1,916	CLICK HERE FOR CUMULATIVE MEMBERSHIP DATA	TOTAL FAMILY UNIT MEMBERS 3,504 FAMILY MEMBERS PAYING HALF DUES 1,805